

SEPTEMBER  
2020

**St. Stephen's Episcopal Church**

212 N. Tulane Avenue

Oak Ridge, TN 37830

Tel: 865.483.8497

[www.ststephensnor.org](http://www.ststephensnor.org)

**The Rev. Bailey Norman**

PRIEST-IN-CHARGE

**The Rev. Dr. Stephen Damos**

PASTORAL ASSOCIATE

**Simon Ballintoy**

DIRECTOR OF MUSIC

[choir@ststephensor.org](mailto:choir@ststephensor.org)

**Caroline Wood**

YOUTH MINISTER

[youthminister@ststephensor.org](mailto:youthminister@ststephensor.org)

**Cameron Ellis**

TREASURER

[treasurer@ststephensor.org](mailto:treasurer@ststephensor.org)

**Elizabeth Pack**

PARISH SECRETARY

[secretary@ststephensor.org](mailto:secretary@ststephensor.org)

**Nancy Anderson**

CHRISTIAN FORMATION

[cecoord@ststephensor.org](mailto:cecoord@ststephensor.org)

**Caroline Wood, Craig Brent,**

**Mary Petersen**

EPISCOPAL YOUTH

FELLOWSHIP (EYF)

[eyf@ststephensor.org](mailto:eyf@ststephensor.org)

**Jim Ball**

WEBMASTER

[webmaster@ststephensor.org](mailto:webmaster@ststephensor.org)

**Sharon Thomas**

NURSERY SUPERVISOR

**Brent Sigmon**

SENIOR WARDEN

[seniorwarden@ststephensor.org](mailto:seniorwarden@ststephensor.org)

**Judith Delaney**

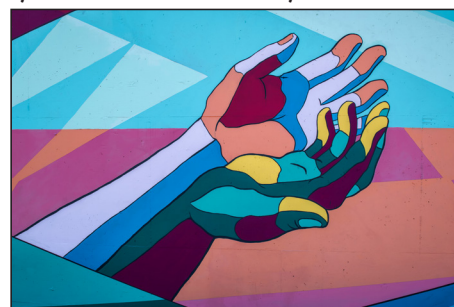
JUNIOR WARDEN

[juniorwarden@ststephensor.org](mailto:juniorwarden@ststephensor.org)

# The Evangel

## LIVE(STREAM) AND IN-PERSON

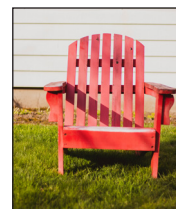
At long last, thanks to the input of our Vestry and staff, we are ready to launch in-person worship beginning on **September 13, 2020**. Everyone will receive a separate document outlining the safety protocols we will follow. I repeat my mantra that all of this is **SUBJECT TO CHANGE** – the possibility still remains that either numbers spike again in our area or someone who has been exposed to COVID-19 attends a service. In these scenarios, we would have to suspend in-person for at least two weeks. My hope is that our next change instead will be taking the next phase of expanding in-person worship.



*Photo by Tim Mossholder on Unsplash*

The quick reference guide for safety protocol is for you to keep as a hard copy – put it up on your fridge or keep it somewhere easily accessible. I want to share a few other pertinent details. While these are too long to print on a single sheet, please keep these handy as well:

- **The in-person worship service will be OUTDOORS in the grove at 9 AM.**
- A separate service will be livestreamed, but it will be pushed back to **10:30 AM** instead of 10 AM.
- For in-person worship, we will either be taking attendance and/or asking you to fill out an attendance card. This is not because we are trying to keep any stats for praising those who attend or shaming those who don't. Far from it. This is purely for the purposes of **contact tracing**. If we discover that someone who has attended a service has been exposed to or diagnosed with COVID-19, we will contact everyone who attended the services in question to notify them. I know we as Episcopalians don't like filling out attendance cards, but this is solely for making sure that we can easily inform people in the event of someone getting sick so everyone can take proper steps for their own well-being.
- For those who attend in-person, **please bring your own lawn chairs**. We will have a few of our chairs for those who forget or who cannot bring their own, but if at all possible, please bring your own chairs.
- The in-person service will be a **SPOKEN** service (i.e., no music), at least at the beginning. Simon and I are engaged in conversations about how to add music to that service, and we hope that music will slowly be integrated back into in-person worship. But for now, our initial services for September will be entirely spoken.



*Photo by Zachary Keimeg on Unsplash*

- Both services will offer communion **two Sundays a month**. The other two Sundays will be Morning Prayer (there is no 5th Sunday again until November; we will have revised plans by then!). **The first communion service will be on September 20, with the next taking place on September 27.** The rota for October will be developed by the middle of September. Whatever the liturgy is for in-person worship will be the same liturgy for the live streaming service – in other words, you are not missing out on communion by opting to remain online.
- Communion at both services will be offered in **one kind only** (i.e., wafers only).
- Distribution of communion for online worship will continue to follow the method we have used since the suspension of in-person worship – i.e., communion will be delivered to those who request it ahead of time. Reminders and notification will be given ahead of each communion service.
- At the dismissal for in-person worship, please refrain from gathering in large groups. Pack up your chairs and leave as soon as you are able. For now, save our fellowship time for “coffee hour”, which brings us to...
- **Zoom coffee hour will continue following the livestream service.** This ministry will continue to develop and potentially expand, but for now, it will take place around 11:30 each Sunday (or very shortly after the conclusion of the streaming service).
- **IN THE EVENT OF INCLEMENT WEATHER, THE OUTDOOR SERVICE WILL BE CANCELLED.**  
All parishioners will then be asked to tune into the livestream at 10:30. For now, there is no inside contingency plan (more about that in the next bullet item). If in-person worship is to be cancelled for that Sunday, e-mail notification as well as an updated phone message on the church’s answering service will be sent out no later than 5 PM the day before. While we would prefer to make the decision based on the actual weather, because of the fact many of our parishioners drive a good distance to come, we would rather err on the side of caution than have everyone arrive and then cancel.
- **There will be no limit to the numbers who can attend.** Instead of asking people to register, we feel confident that we can exercise appropriate social distancing in the grove. As we have made a choice NOT to limit attendance, we are delaying any inside contingencies until we gather a sense of how many are regularly coming to in-person worship and until we see a further drop in COVID cases in our area. Please note that, once we begin having indoor worship, we will most likely either have to limit spots and/or create a TEMPORARY additional service depending on the number who come. We will evaluate this again after we have had a couple of weeks of in-person worship, especially knowing that we would like to develop an inside plan before the weather gets too cold later in the fall.
- **There will be no nursery for the time being.** As a parent, I realize that not having this is especially hard on parents. But there are several things you can do. First, we encourage you to bring activities for your kids (and we will work on providing some take-home activities that don’t have to go back into busy boxes). For older kids, they are welcome to be on the playground during service. We will all be very kind and welcoming to any of our families, and we will be more than happy to hear their sounds of playing during our worship after missing them for so long!
- **Christian formation** for children will continue online with Ms. Sherry’s Sunday school lessons for children. For youth, Caroline will be leading EYF each Sunday. Adult formation will continue either in regular recordings during the week and on our weekly live studies. I am currently in the process of working out some new adult formation possibilities with several parishioners, and we hope to have some new offerings beginning by the first of October. But for now, except for EYF, all formation classes will continue to be held online.



*Photo by Joseph Castells on Unsplash*

There will be more specific instructions given for the peace, receiving of communion, etc. at the in-person worship, but I hope this gives you a sense of our goals and strategy for trying to keep everyone engaged and for keeping everyone safe.

Above all else, **THERE IS NO PRESSURE ON ANYONE TO RETURN BEFORE THEY ARE READY.** I stress again that, whatever liturgy we offer at in-person service, we will offer on our livestream. The only differences are music (since Simon can pre-record for the livestream) and the mechanics of the service, particularly communion. Our livestream is now a regular part of our Sunday life and, as all of our equipment has FINALLY arrived, we will be returning to the nave for livestream once the installation is complete. This is both to help keep those of you connected who cannot come but also for making our beautiful services available for those either looking for a church home or who are part of our growing virtual community.

As we move forward in this reopening, please note that our goal is not to ultimately return to worship like COVID never happened. What have we learned about being the church during this time of physical isolation? What have we learned about ourselves? What do we want our church to look like and to be when we are back to “normal”? I hope you will see as I do that this time continues to be an opportunity for St. Stephen’s and the wider church to reimagine its mission, how we engage people, and think deeply about how we can make Christ known to the greater world. Please be thoughtful and do let me and/or your Vestry members know what things we can learn and be better at as we slowly “reboot” our physical presence.

Again, please look at the attached safety guidelines in addition to the information above. Keep the guidelines especially close so that you can remember what needs to be done each time you come to the church.

Please do not hesitate to contact me if you have any concerns or questions at 251-604-1705 or at [clergy@ststephensor.org](mailto:clergy@ststephensor.org). Thank you for your continued presence and faithfulness in this wonderful parish.

~ Fr. Bailey

## A FEW NOTES ABOUT MUSIC

I recently came across a cartoon meme which illustrated how hymns are chosen every week:

*The Sunday's readings are perused. The 'Special Sunday's' list is examined. The themes from various liturgical resources are consulted. The list of 'ones the choir can do' is checked'. The 'ones no-one knows or likes' cheat sheet is studied. Everything is fed into the parish computer, which does a very complex calculation. The ministry team meets for some coffee. The worship committee whittles down the options. The prayer meeting prays for guidance. The 'congregational requests envelopes' are opened...*

*... Meanwhile, the Music Director just picks a few of his favorites.*

It's hard to believe that next year will be my twentieth year working as a church organist and choir director. Over the years I have had many conversations with people about their musical choices; I am a great believer in keeping my door open for such conversations. Sometimes these conversations center around specific words or the tune. Other times, certain music reminds them of life events, like favorite wedding hymns or a hymn that guided them through an illness. There are always the 'requests' for hymns never to be sung again. We must not forget the traditionalist and the contemporaries, each with their own stance. Often, I will be handed service bulletins collected while visiting other churches, with a list of accompanying suggestions on new things to try. Usually there is excitement in these situations, as the person traveling experienced something different from our own tradition!



Photo by Michael Maasen on Unsplash

So, how do church musicians handle these requests? Well, truthfully, the easiest way around fulfilling everyone's desires is by sticking to the themes of the lectionary and making sure that whatever music is chosen compliments the service. This is where everyone can find a connection. I would encourage you to pay attention over the next few weeks to both the lyrics and the tunes. When designing a worship service, the flow is very important. There are high points and low points in our liturgy. It is important to make sure that the lyrics mirror and support the lessons or sermon. The music tunes themselves are very important. They evoke feelings and emotions, and consideration should be carefully given to what emotions are needed for the given moment. When you go to the movies, the music is designed to make the audience feel certain emotions, something which we call 'leitmotif'. As Episcopalians, we are good at honoring our traditions, while embracing new things. Hearing how music brings a passionate response to their faith enhances my own faith, as well as my relationship with you. Believe me when I say I hear your thoughts, and I will try and incorporate your particular thought or idea into worship. I confess, however, with the willingness to serve a congregation, I also see how we (church musicians) can often become stale to our own preferences and desires. I often think this is why I don't spend a lot of time listening to music in the car. After all, I spend most of day already heavily engaged with music.

As I meet and work with other aspiring musicians that are entering the field of church music, one of the most important things I share is that they should not enter into a church music career expecting to spend their golden days picking music that only they themselves enjoy. Church musicians play a huge part in the pastoral life of the church, and this career is by no means a form of self-pleasure, but it is certainly a pleasurable one! So, whatever your musical preferences or background, I hope that you will continue to be blessed and touched by both the traditions and diversity of our music and our liturgy, and delve deep into why we might be singing this particular tune today!

To close, I will revert back to the opening meme. As I read the meme above, I realized that there is one important thing missing. That step is 'Check music for copyright.' Look for a follow-up article on what copyright means for church musicians and our musical offerings in the age of COVID-19.

~ Simon Ballintoy, Director of Music

## ENCOURAGING THOUGHTS

Many of you who know Jamey and I are aware that the last almost two years have been difficult for us. Last year I was in hospitals in Oak Ridge, Norway, Canada, Maryville, and then Oak Ridge again. I spent almost two months in a nursing home and almost three months in an assisted living center in 2019. During 2020, I have spent almost nine months in an assisted living center.

We have experienced a helicopter evacuation from a cruise ship off the coast of Norway, and an air ambulance evacuation from Canada to Knoxville. In the Canadian incident, Jamey and her sister brought me back to life through CPR when I had no pulse, no heart beat, and was not breathing. By the Grace of God, I am still alive.

I remain in the the assisted living center because I wear a Life Vest that prevents heart attacks. Until my heart function improves, I will stay here. I have been well taken care of. But Jamey has had the far more difficult task. She is home alone: working from home, with all the responsibilities of home ownership and the care of our animal companions. And dealing with the pandemic like all of us. Keep her in your prayers.

Throughout these trials, a pillar of strength for both of us has been the clergy, staff, and members of Saint Stephen's. Your prayers, well wishes, visits, calls, cards, and e-mails have been a constant message of support and hope.

In addition, our spiritual awareness has grown considerably with our interactions with all of you. You are indeed a very special family of faith.

God Bless each and every one of you. We will never forget all that you have done for us both.

*~ Allan Reiss*

## OUTREACH SUPPORT DURING COVID-19

Jo Bruce of the Family Resource Center has requested our help in trying to help those families that do not qualify for COVID help from ADFAC. She is requesting monetary donations to help with items such as gas for work, storage needs, food, and medicines.

Money is also needed to keep the WB School based mental health service with Helen Ross McNabb going. Present funding does not presently meet the needs of that program. At its last meeting the Outreach Committee approved giving \$1500 to help meet the above needs.

If you are able, please consider making a donation to help these programs. Checks should be made out to: The Family Resource Center and sent to:

Jo Bruce, Director, Family Resource Center  
Willowbrook School  
298 Robertsville School  
Oak Ridge, TN 37830

Thank you!

*~ Outreach Committee*

## WOMEN'S INTERFAITH DIALOGUE

Women's Interfaith Dialogue is offering its fall series of presentations via Zoom. The first in the series, "Oak Ridge Solutions on Racism (ORSOR) – Bringing People Together," is scheduled for 11 a.m. on Monday, September 14. Professor Valeria Roberson of Roane State Community College will discuss ORSOR's current initiatives, including efforts to increase voter registration. She will also explain how additional people can get involved. Please contact Gay Marie Logsdon (logsburn@att.net) by 12:00 noon, Sunday, Sept. 13, if you are interested in attending. Men are also welcome to attend.

*~ Gay Marie Logsdon*



# September Celebrations

## BIRTHDAYS

9/1	Charles Kirk	9/18	Harold Davis
	Gene Lane		Matt Berven
9/2	Adam Cavender	9/19	Jacob Anthony
	Jeanne Kring		Marilyn Davis
	Gabe Ledford		Nancy Caldwell
9/4	Melisha Willis	9/20	Mark Henry
9/5	Elissa Aaron	9/24	Elizabeth Shane
	Jack Penoyer	9/25	Christine Walberg
9/7	James Knight	9/28	Tom Clary
9/8	Kathy Moore		Peggy Volk
9/9	Roger Derby		Serge Fournier
9/12	Mitchell Gibbons	9/30	William Cavender
9/14	Beth Stickle		
9/17	Richard Neill		
	Willy Mauk-Olson		

## ANNIVERSARIES

9/1	Deborah & Roger Johnson
	Katie & Ken Kendall
9/5	Linda Twohig & Andrew Payzant
9/15	Lola & Chuck Estes, III
9/25	Kelly & Jeff Cooper, Jr.



Where God is seen, love is felt, lives are changed!

---

St. Stephen's Episcopal Church 212 N. Tulane Avenue Oak Ridge, TN 37830

865.483.8497 Tel • 865.483.9926 Fax • [www.ststephensor.org](http://www.ststephensor.org)